



GRKC

Grand Rapids Kennel Club

The Hairy • The Official Newsletter of the Grand Rapids Kennel Club
OCTOBER 2010

PRESIDENT

Mr. Clare Lodenstein
claremontboxer@sbcglobal.net
269-792-9590

VICE-PRESIDENT

Kevin Nieboer

TREASURER

Pat Kronemeyer

REC. SECRETARY

Lin Beenen

CORR. SECRETARY

Sandee Lovett
PO Box 68
Trufant, MI 49347
616 984-5303

DIRECTORS AT LARGE

Pat DenBoer
Len Podleski

AKC DELEGATE

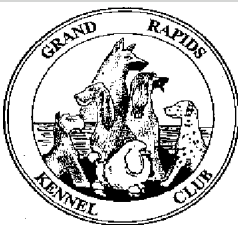
Sandee Lovett

Website

Nori Goodhue
webmaster@
grandrapidskennelclub.org

Monthly meetings

are held at
Cascade Animal Hospital
6730 Cascade Road SE
Grand Rapids 49456
7:30 PM



Monthly Meetings

Tuesday, October 26th

Tuesday, November 23rd

2011

January 25th - February 22nd

March 22nd - April 26th - May 24th



Upcoming Event

Grand Rapids Kennel Club Show
Sunday, November 14th, 2010

At September's meeting, the Nominating Committee has reported the slate of candidates. List of candidates are listed in the minutes of this *Hairy*. Remember that at October meeting additional nominations may be made from the floor from any member in attendance. If the nominated person is not present at this meeting, the nominator can read an acceptance statement from the proposed candidate signifying her/his willingness to be a candidate.

Please mark November 14th on your calendar for all those members working at our club's all breed show. Contact **Pat DenBoer (616-260-6088) show chairperson, Len Podleski (616-262-3935) for conformation stewarding, or Jan Hamming (616-534-3462) for helping out in the obedience area.** It is especially important for all stewards be at the show no later than half an hour before judging starts! Please contact **Pat Kronemeyer (616-874-7989)** if you are also able to work on Friday or Saturday. The other clubs would appreciate any help we can give them.

I know many club members have had a very successful year in dog shows. Don't forget to fill out the form (in this issue of *The Hairy*) to receive an award for your achievements this past year. Please submit to Awards Committee by December 7th.

Remember that your Grand Rapids Kennel Club membership dues are due by January 1, 2010. The dues are \$8 for a single and \$16 for a couple. Please send your payment to Pat Kronemeyer, 6530 Myers Lake Avenue, Rockford, MI 49341.

www.grandrapidskennelclub.org

Grand Rapids Kennel Club
General Membership Meeting

September 28, 2010

The meeting was called to order at 7:37 PM by President Clare Lodenstein.

Members present: Kevin Nieboer, Len Podleski, Mike Lovett, Sandee Lovett, Pat Kronemeyer, Joe Gogulski, Delberta Gogulski, Marjorie Straub, Stephanie DeGraaf, Michelle Waterman, Tab Waterman, Julie Sattler, Nori Goodhue, Pat Den Boer, Tina Bartholomew, Mary Beecher, Valeri Padgett, Clare Lodenstein, and Lin Beenen

Guests present: Chris Musson, Diane Black, Georgia Bowen, Elaine Dempster, Lucy Koch, and Brenda Van Houten

The May minutes were approved as printed in the September *Hairy*. (motion Kevin, second Pat K, unanimous).

The treasurer's report was accepted as printed in the September *Hairy* (motion Kevin, second Julie, unanimous)

Correspondence: Sandee reported that we received an invitation from *Leader Dogs for the Blind* for an event on November 20 in Sterling Heights. They will have a live and silent auction, as well as goodies from some of metro Detroit's best restaurants. Clare mentioned that we are invited to have a booth at the Harvest Festival at the Lowell Fairgrounds on October 9. Let him know if you are interested in working at it.

Show Committee: Clare pointed out the new show policy for members taking effect this November. Pat Kronemeyer reported that everything is under control for the Harvest Cluster shows. We are still working on the luncheon menus. If you are interested in working on Sunday, November 14, call Len Podleski for conformation ring stewards, Jan Hamming for obedience, and Pat K for anything else.

Dog Days: Pat DenBoer thanked everyone who helped. The Humane Society was thrilled with all the pet food they received. Reserve June 4 for Dog Days 2011.

Christmas Party: Pat D. is looking for ideas for entertainment. It will be held sometime between Christmas and New Year's Day at the Radisson on Ann Street.

Nominating Committee: The committee, Tab Waterman, Chair, Len Podleski and Nori Goodhue presented the following slate:

President - Clare Lodenstein
Vice President - Kevin Nieboer
Treasurer - Pat Kronemeyer
Recording Secretary - Nori Goodhue
Corresponding Secretary - Sandee Lovett
Director at Large - Len Podleski
Director at Large - Pat DenBoer
AKC Delegate - Sandee Lovett

Nominations from the floor will be taken at the October meeting.

Old Business: none

New Business:

Guests present: First meeting - Lucy Koch - has Smooth Fox Terriers and a Chesapeake puppy. She is interested in conformation and obedience. Brenda Van Houten expects to purchase a Rhodesian Ridgeback and hopes to show in conformation.

Second meeting: Elaine Dempster has Cavalier King Charles Spaniels; Georgia Bowen also attended her second meeting.

Chris Musson and Diane Black, both former members, attended their third meeting and were voted into membership. Chris has Standard Poodles and Diane has Bulldogs. Welcome!

The Muskegon Kennel Club will have a program on Traveling with Pets and Emergency Care while on the Road on October at the Norton Shores Library.

Anyone with ideas for speakers or programs at our monthly meetings is asked to let Clare know.

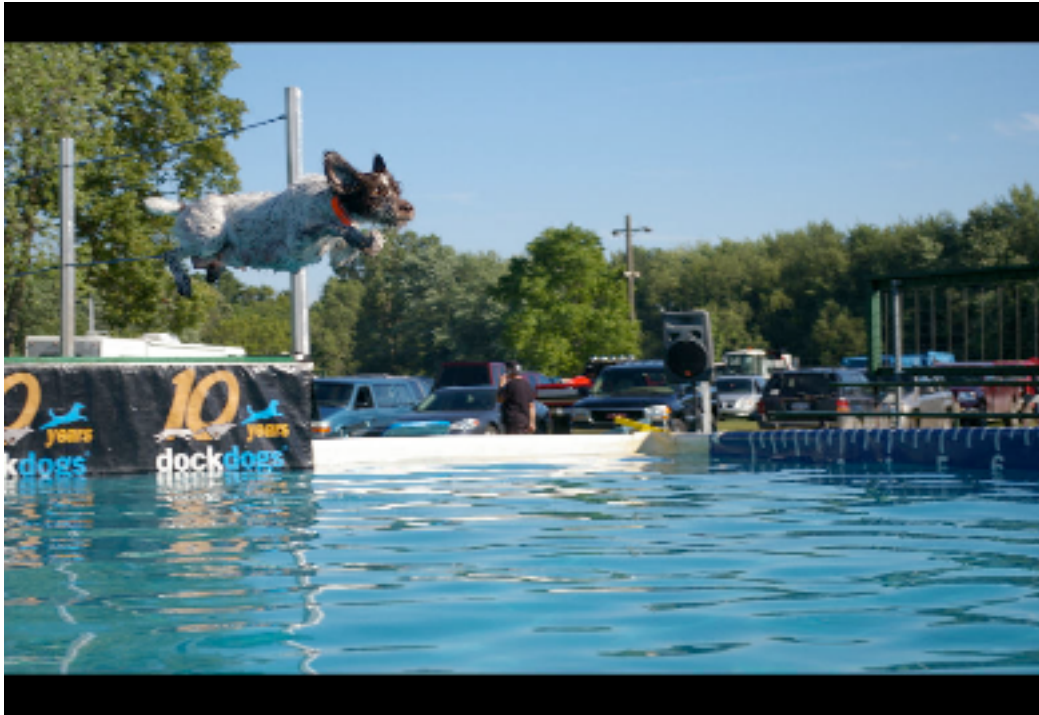
The meeting was adjourned at 8:30 PM (motion Delberta, unanimous)

Respectfully submitted,

Lin Beenen

Recording Secretary

GRKC Dogs in Action



Zucker, owned by Tina Chase, is shown at the Berlin Fair this past summer. Her personal best was 13 feet, 3 inches while nursing 4 week old pups in-between competition. Way to go girl!



Poetry in motion. Margaret Sudekum with Raz at 13 months old being shown at the Louisville in May.

New Policy for GRKC Members Showing Dogs at Our Show

In the interest of good sportsmanship, no Conformation Champion of Record or Obedience Champion of Record, owned by a member of the Grand Rapids Kennel Club or a member's immediate family will be shown at these events. In addition, no member of the Event Committee nor anyone in their immediate family shall handle a dog at these events

AKC Launces New Program

The American Kennel Club announced the launch of the **Breeder of Merit** program, a new initiative designed to recognize AKC's core breeders.

"The Breeder of Merit program allows the American Kennel Club to celebrate our dedicated, passionate breeders who truly are the backbone of the sport and the foundation of our organization," said AKC's Chief Operating Officer John Lyons. "Our Breeders of Merit are committed to both improving their breed through health testing and selective breeding programs, and proving their breed through achievements in the show ring. They are special and will be emulated by new breeders entering the sport. Being a successful breeder in the Fancy does not come easy. Years of hard work, vision, and a willingness to do the right thing are required to be successful. Our Breeders of Merit have these qualities and deserve to be recognized."

To learn more or apply for the Breeder of Merit program, visit <http://www.akc.org/breederofmerit> or contact Tina Yuhl at 919-816-3932 or txy@akc.org.

Membership Updates

The following people have completed all the necessary paperwork and have been voted into membership. Please add the following information into your directory.

Chris Musson
4538 Royal Glen Dr. NE
Comstock Park, MI 49321
616-252-7556 or 616-485-4397
chrismusson8@gmail.com
Breeds: Standard Poodle

Diane Black
3030 Timpson Avenue
Lowell, MI 49331-8914
616-262-2298 or 616-897-0017
dblowell@hotmail.com
Breed: Bulldogs

Welcome back to Chris and Diane, both were former members.

Two quests who attended September's meeting were Brenda DenHouten and Lucy Koch. Brenda is from Wyoming and is in the process of buying a purebred Rhodesian Ridgeback.

Lucy is from Trufant and has a Fox Terrier and a Chesapeake Bay Retriever.

Elaine Dempster has attended two meetings and completed her paper work. At the next meeting she is eligible to be voted into the club.

The following people have attended one meeting and haven't applied yet. They are: Laurie Johnson, Ann Carter, Georgia Bowen, Glen Veltman, and Lynn Brozek.

What the AKC PAC Can Do For You



The rights of responsible dog owners are under attack. State legislatures across the country continue to introduce bills that seek to infringe on your ability to own dogs—including mandatory spay/neuter, ownership limits, warrantless search and seizure, and breed ownership bans.

The American Kennel Club Political Action Committee (AKC PAC) helps elect legislators who share our commitment to reasonable laws that protect our rights and promote responsible dog ownership and breeding. It demonstrates that dog owners will hold their representatives accountable for how they vote on dog issues, and that they stand behind leaders who share our beliefs.

Contributing to the AKC PAC greatly enhances the efforts of the AKC Government Relations Department and its ability to fight for your rights as a dog owner. It also allows the AKC to provide tangible support to leaders who protect your right to own dogs and to fight those who seek to infringe on those rights.

You Can Make a Difference!

Here's how it works: Contributions to the AKC PAC are used to support the candidacy of leaders who defend your rights as a dog owner. *No matter what amount you choose to give, 100 percent of that money goes directly to support the campaigns of candidates who share our commitment to reasonable laws that protect your rights and promote responsible dog ownership and breeding.* Although you cannot earmark funds for specific candidates, as a contributor, you can recommend legislators to the AKC Government Relations Department whom you believe deserve AKC PAC support.

The more legislators there are who support our values, the more assured you can be that your rights will be protected. It's that simple!

Contribute Today!

Candidates are already beginning their campaigns for the 2010 elections. Please consider contributing today so that we can immediately start spreading the message that we stand behind those who protect our rights and promote responsible dog ownership.

Please visit www.akc.org/pac or call (919) 816-3720 and help ensure that your Congress and state legislature support your dog and your rights!



GRKC ACHIEVEMENT AWARDS

At our banquet, we plan to give awards to members who have earned AKC titles (conformation, obedience, agility, or tracking) on their dogs.

1. The title must be finished during calendar year 2010.
2. The dog must be owned or co-owned by a member of the Grand Rapids Kennel Club, and must have been owned by such member when the title was earned.
3. Only one award will be given per dog, regardless of how many titles that particular dog earned during 2010.
4. The information must be supplied to the awards committee by December 7, 2009, using this form. If the title is finished in early December, please contact a member of the awards committee right away, and we will do our best to include you in the current year.
5. If you think you may qualify for one of the perpetual trophies, please contact a member of the awards committee.

Name of dog (as you want written on the plaque)

Name of owner(s)

Breed

Title(s) earned

Date(s) title(s) finished

Obedience or Agility scores _____

While the plaques are given only for AKC titles, members are often involved in other activities that deserve recognition. For example, you may have been involved in rescue for you breed or in therapy work with your dog. Also, if your dog earned any titles from other organizations (such as KCK or UKC), we want to recognized your accomplishments. Please supply any relevant information below. Please attach a copy of the earned title. Print or type all information given to the committee.

**Please mail to Lin Beenen, 975 Cumberland, Lowell MI or fax to 336-9850 by 12/7/09.
PLEASE ATTACH COPY OF AKC CERTIFICATE**

Member signature _____ **Phone** _____

How to Count Grand Championship Points at AKC Dog Shows

This document has been created for you by the American Kennel Club® to help you understand the point schedule and how Grand Championship points are counted.

A dog must be (1) a Champion of Record or (2) have been transferred to BOB competition based upon the owners' records of their having completed the requirements for a CH title to be eligible for Grand Championship (GCH) competition.

The American Kennel Club requires a dog to obtain a total of 25 points with three major wins (a major win is worth three points or higher) to become a Grand Champion. The majors must be won under three different judges and at least one other judge must award some of the remaining points – so you need to win under at least four different judges. Also at least one Champion of Record must be defeated at three of these shows.

Best of Breed – BOB; Best of Opposite Sex – BOS
Select Dog – SD; Select Bitch – SB

Remember, point schedules vary by show location. If you are not at the show, make certain you get the points schedule for the event region where your dog won. Refer to the *Schedule of Points*.

The Grand Championship points awarded are determined by the same divisional point schedules that are used for the calculation of championship (CH) points.

Check the posted copies of the judge's book before you leave the show to make certain your dog was marked correctly. Mistakes do happen! Also, verify that your dog's AKC registration number is correct in the catalog. If it is not correct, let the superintendent know before you leave the show. In both cases, it's easier to make the correction on the day of the show rather than later.

How To Figure Points If Your Champion Dog or Bitch Goes Best of Breed

Grand Championship points will be calculated according to the number of dogs competing in the regular classes, as well as dogs competing in Best of Breed competition.

A dog awarded BOB will be credited with the number of GCH points calculated for BOB or BOS whichever is greater.

If the judge elects to award GCH points to his BOB winner today, whether the BOB is a dog or a bitch, the BOB will receive 5 GCH points.

EXAMPLE:

Total of class dogs	
Total of class bitches	
Total of Champion dogs	
Total of Champion bitches	

POINTS	D ¹ B	D ² B	D ³ B	D ⁴ B	D ⁵ B
AKC Breed or Varieties	2 2	5 5	7 8	8 10	11 15

BOB (7 class dogs + 5 class bitches + 6 champions = 18 dogs for 5 pts)





TIPS: Veteran dogs or any other non-regular class dogs are not counted in determining points. All eligible entrants from non-regular classes can earn Grand Championship points. Any Champion dog from the regular or non-regular classes is not considered for the requirement to defeat at least one Champion of Record at three shows.

TIPS: When counting dogs in competition, you only count dogs present that are judged. Dogs that are disqualified, dismissed, excused, absentee or have all awards withheld do not count.

How To Figure Points If Your Champion Dog or Bitch Goes Best of Opposite Sex

If the Judge elects to award GCH points to his BOS winner, we count all dogs of their sex competing.

EXAMPLE:

Total of class dogs	
Total of class bitches	
Total of Champion dogs	
Total of Champion bitches	

POINTS	D ¹ B	D ² B	D ³ B	D ⁴ B	D ⁵ B
AKC Breed or Varieties	2 2	5 5	7 8	8 10	11 15





BOS – dog (7 class dogs + 3 champion dogs = 10 dogs for 4 pts)

BOS – bitch (5 class bitches + 3 champion bitches = 8 bitches for 3 pts)

How To Figure Points for Select Dog or Bitch

Now we move on to Select Dog and Select Bitch. These are new AKC terms created for use in the Grand Championship program. Here we count all dogs of the same sex defeated in the BOB and regular classes. Once again, it is entirely at the judge's discretion to choose a Select Dog and/or a Select Bitch.

EXAMPLE:

Total of class dogs	
Total of class bitches	
Total of Champion dogs	
Total of Champion bitches	

POINTS	D ¹ B	D ² B	D ³ B	D ⁴ B	D ⁵ B
AKC Breed or Varieties	2 2	5 5	7 8	8 10	11 15

BOB – is a male

SD is chosen (10 dogs – 2 dogs = 8 dogs for 4 pts)

SB is chosen (8 bitches – 2 bitches = 6 bitches for 2 pts)

TIPS: SD/SB count all dogs competing of the same sex then subtract 2.

Sample

Work through the following examples and see if your answers are correct. We have put together a sample judge's sheet to help you understand some of the possibilities.

AMERICAN KENNEL CLUB SHOW, USA

Catalog Number Award	Catalog Number Award	Catalog Number Award
PUPPY DOGS	12-18 MOS. DOGS	OPEN DOGS
6-9 MOS 9 <u>1</u>	15 <u>2</u>	5 <u>1</u>
11 <u>2</u>	17 <u>1</u>	7 <u>2</u>
		19 <u>3</u>

WINNERS WITHHELD RESERVE WITHHELD

PLEASE ENTER CATALOG NUMBER IF AWARDED

I certify that in my opinion the WINNER 5 & RESERVE 9 are deserving of championship points on this day.

Catalog Number Award	Catalog Number Award	Catalog Number Award
PUPPY BITCHES	BRED-BY BITCHES	OPEN BITCHES
6-9 MOS 10 <u>1</u>	<i>Excused Lame</i> 12	6 <u>1</u>
9-12 MOS 14 <u>1</u>	20 <u>1</u>	8 <u>Disqualified Measured Out</u>
		16 <u>2</u>

WINNERS WITHHELD RESERVE WITHHELD

PLEASE ENTER CATALOG NUMBER IF AWARDED

I certify that in my opinion the WINNER 20 & RESERVE 6 are deserving of championship points on this day.

BEST OF BREED COMPETITON

19D 21D 22B 23D 24B 25D 26B
Absent

BEST OF BREED BEST OF WINNERS BEST OF OPPOSITE SEX

I certify that in my opinion the Best of Breed _____
Best of Opposite Sex _____ Select Dog _____ and Select Bitch _____
are eligible and deserving of Grand Championship points on this day.

POINTS	D ¹ B	D ² B	D ³ B	D ⁴ B	D ⁵ B
AKC Breed or Varieties	2 2	5 5	7 8	8 10	11 15

BOB – dog (5 pts); BOB – bitch (5 pts); BOS – dog (4 pts)

BOS – bitch (3 pts); SD – (4 pts); SB – (2 pts)

We hope the foregoing has helped you understand the point system, thus adding to your enjoyment of dog shows.

Now go to the *Schedule of Points* and work the above scenarios for your breed.

Should you have additional questions please refer to Chapter 16, Section 1, *Rules Applying to Dog Shows*.